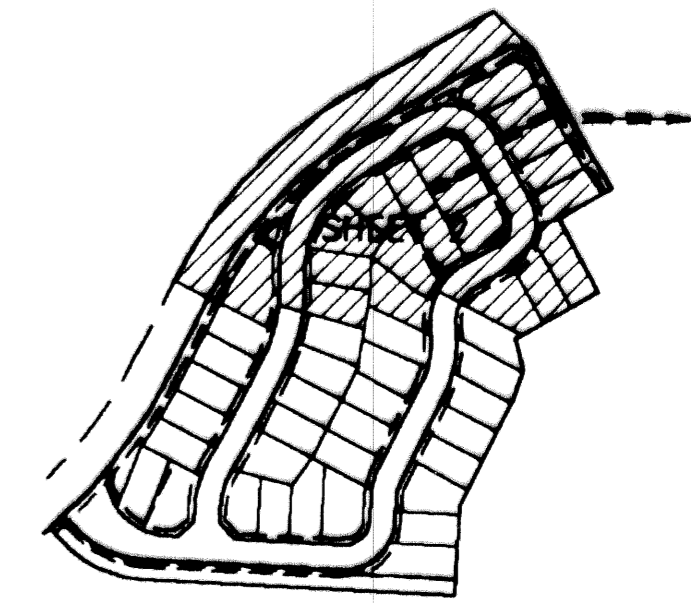
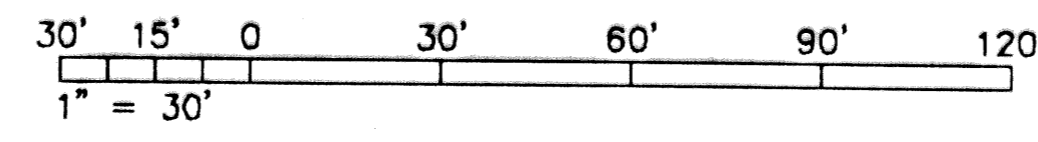


PLAT OF NORMANDY VILLAGE

BEING A REPLAT OF A PORTION OF TRACT "Q-2" OF THE REPLAT OF TRACTS "Q-1" AND "BBB-1", REPLAT OF TRACTS "CCC", "AAA" AND A PORTION OF TRACT "BB" RECORDED IN PLAT BOOK 47 PAGE 81 IN SECTION 18, TOWNSHIP 43 SOUTH, RANGE 43 EAST IN THE CITY OF WEST PALM BEACH, PALM BEACH COUNTY, FLORIDA
 APRIL 1994 SHEET 2 OF 3



KEY MAP
N.T.S.

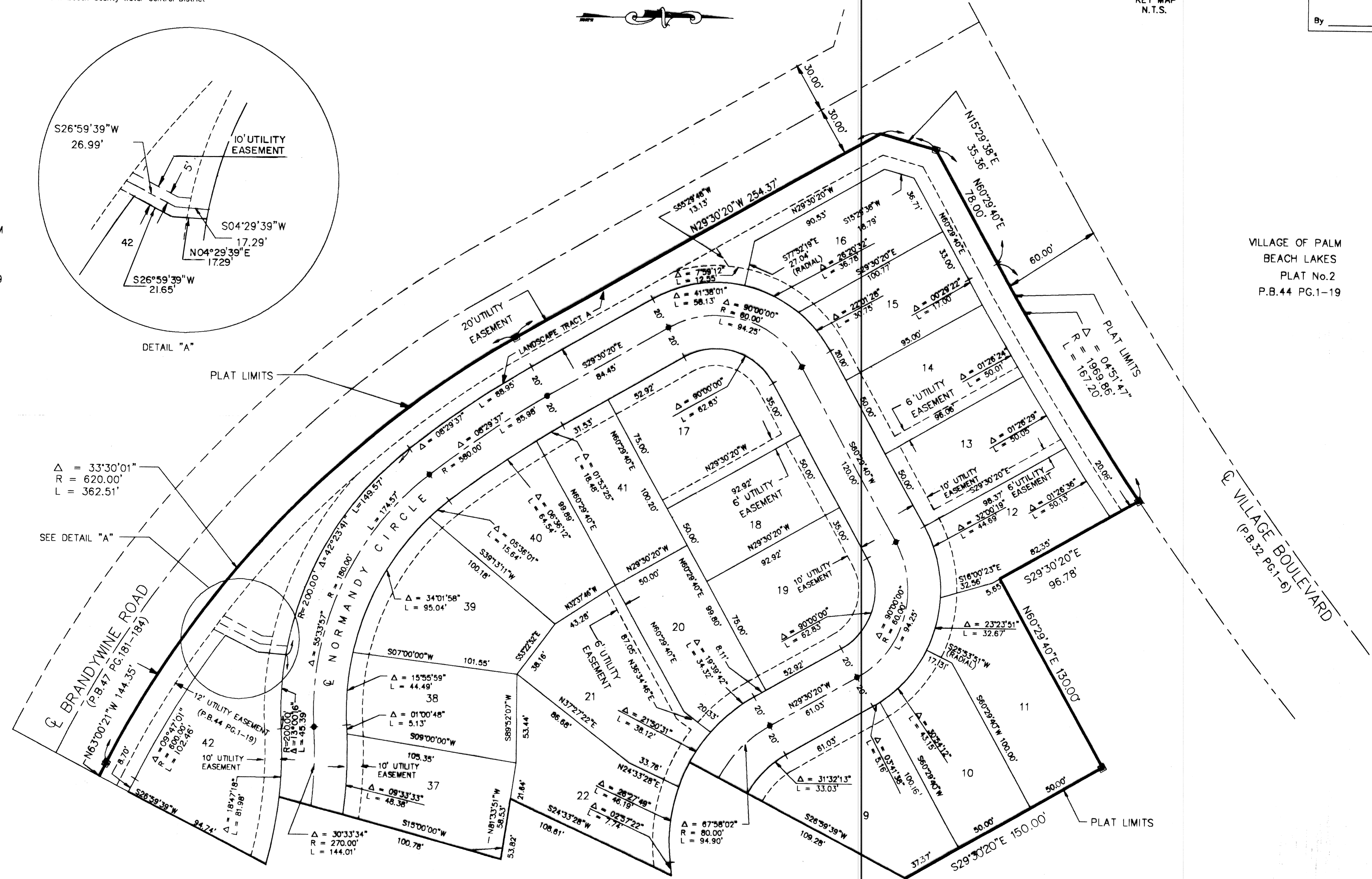
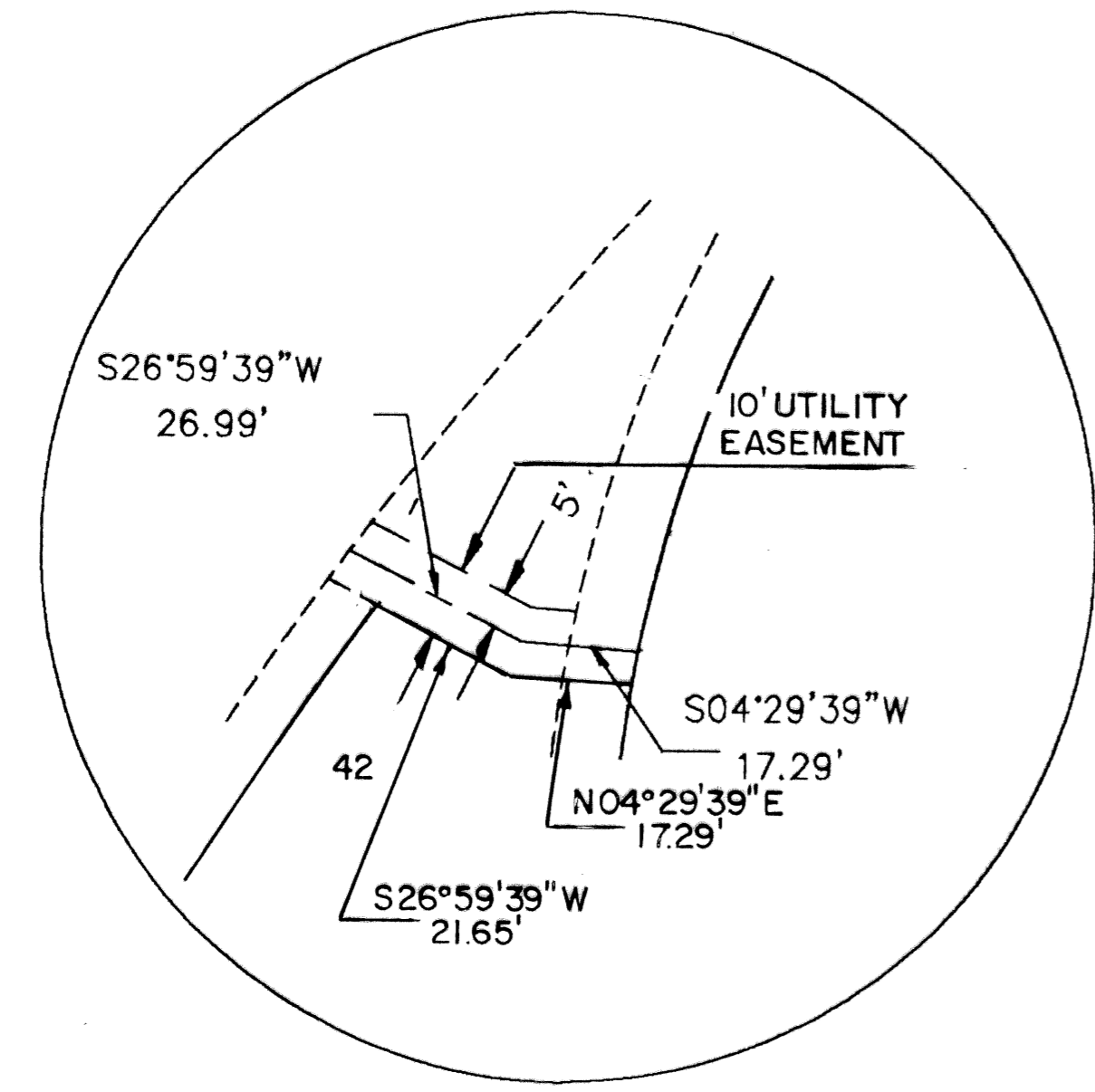
199

STATE OF FLORIDA
 COUNTY OF PALM BEACH
 This plat was filed for record at ___ M. this day ___ of 1994, and duly recorded in Plat Book No. ___ on Pages ___ thru ___.
 DOROTHY WILKEN
 Clerk Circuit Court
 By _____ D.C.

- LEGEND**
- P.O.B. = Point of Beginning
 - P.O.C. = Point of Commencement
 - R = Radius
 - Δ = Delta
 - L = Arc Length
 - = Set Permanent Reference Monument (4x4 Concrete Monument) #4659
 - = Permanent Control Point
 - P.B. = Plat Book
 - PG. = Page
 - ⊕ = Centerline
 - N.P.B.C.W.C.D. = Northern Palm Beach County Water Control District

VILLAGE OF PALM BEACH LAKES
 PLAT No.2
 P.B.44 PG.1-19

VILLAGE OF PALM BEACH LAKES
 PLAT No.2
 P.B.44 PG.1-19



Plotted: 3/4/1994 2:15pm
 Plot Scale: 1"=30.0'

COMMISSIONER OF PLANNING & ZONING
 CITY OF WEST PALM BEACH
 PLAT NO. 72
 PLANNING BOARD
 APPROVED
 DATE: 1/19/94
 PAGE 1/4/94
 FILED MAP # 1994-184
 OLD MAP # 1994-184
 MAP CODE - 1994-184
 CLARK

COMPUTED _____
 DRAWN _____
 CHECKED _____
 APPROVED _____
 JOB NO. 93-374

This instrument was prepared by:
 ALLAN FRANK OSUND P.L.S.
 Gee & Jensen, Engineers, Architects, Planners, Inc.
 One Harvard Circle
 West Palm Beach, Florida 33409-1923

MATCH LINE SEE SHEET 3 OF 3